



*Surface Series*



*Hatch Series*



*Render Series*



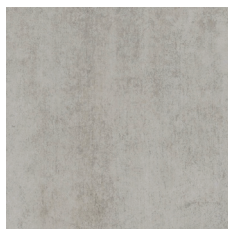
*Pumice – PSC-01*



*Chert – PSC-02*



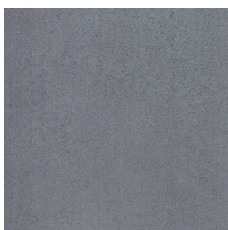
*Mink – PGC-05*



*Heron – PGC-06*



*Gabbro – PSC-03*



*Basalt – PSC-04*



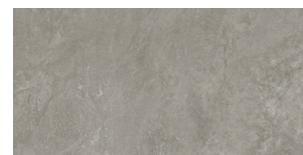
*Guinea – PGC-07*



*Tapir – PGC-08*



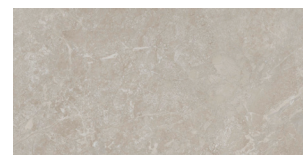
*Fuse – PRC-09*



*Delve – PRC-10*



*Meld – PRC-11*



*Lucid – PRC-12*

2.5mm 20 mil Wear Layer – Glue Down with Square Edge

**FEATURES & BENEFITS**

- Surface and Hatch Series: 18" x 18" Tiles  
Render Series: 12" x 24" Tiles
- 2.5mm/20 mil: Lifetime Residential Warranty, 15-Year Commercial Warranty From Date of Purchase
- Durability, dependability, and clean designs
- Glue Down LVT is finished with an enhanced polyurethane finish, that provides superior scratch and scuffing resistance
- Cost effective LVT option that meets the needs of many of your flooring projects
- 100% phthalate free
- FloorScore® Certified



CERTIFIED BY  
SCS Global Services

